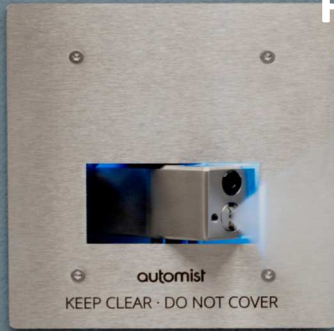


Pre Installation Requirements



VAPOURMIST SOLUTIONS Domestic Fire Suppression

Contact us with any queries or for support on 01344985895 or info@vapourmist.co.uk

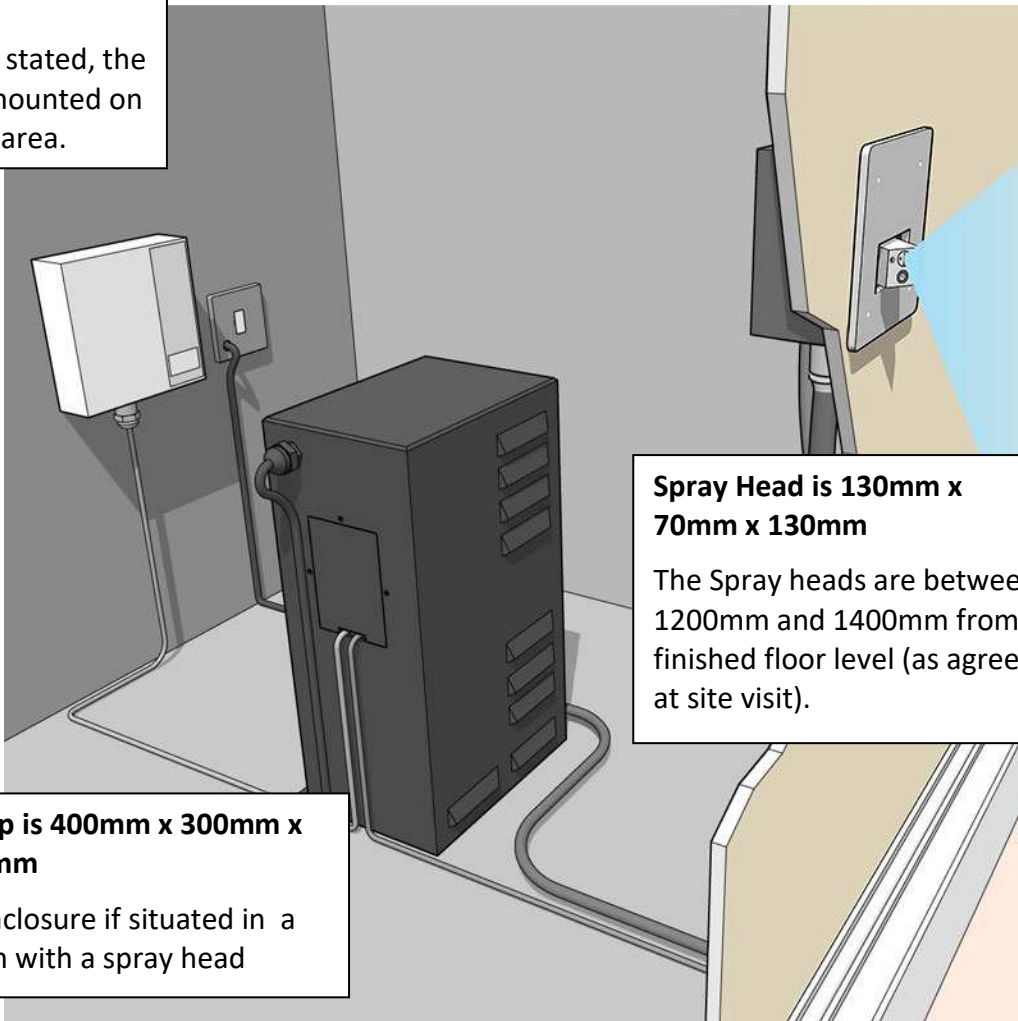
As you have chosen the Silver Service, you or your agents will need to provide various services before Vapourmist Solutions can install and commission your Automist® System.

THE WORKS IN THIS DOCUMENT MUST BE COMPLETED PRIOR TO OUR ARRIVAL FOR FINAL INSTALLATION

**Control Panel is 155mm x
42mm x 155mm**

Unless otherwise stated, the control panel is mounted on wall in the pump area.

Key Product Information



**Spray Head is 130mm x
70mm x 130mm**

The Spray heads are between 1200mm and 1400mm from finished floor level (as agreed at site visit).

**Pump is 400mm x 300mm x
200mm**

In enclosure if situated in a room with a spray head

Section 1 - Pump Cupboard

1 Cold water feed and 1 Electricity feed (as per below) are required for each pump.

Ensure that a suitable cupboard is provided. Ensure that there is room for each Automist pump **plus an extra 100mm of height, width and depth around each pump**



Section 2 - Water Supply

This must be Live and Peranent at the time of 2nd fix installation or we cannot complete

- Must be within 50cm of the pump
- Must be in 15mm copper pipe
- Must have ¾ BSP Valve Fitted
- Must provide a minimum of 8 LPM flow
- Must provide at least 1.5 Bar Pressure

Section 3 - Electricity Supply

This must be Live and Peranent at the time of 2nd fix installation or we cannot complete



- Must Have C16 RCBO In place within Consumer Unit for our system
- Must Use FP200 (2.5mm) electrical cable directly from Fuseboard to Spur



- Must be 13 Amp Unswitched Fused Spur with Flexi Outlets

- Must be no more than 75cm from Pump Location

Section 4 – 1st Fix Installation of Hoses

To enable us to install the Smartscan Spray heads, please follow routes and height of final head locations agreed in site visit

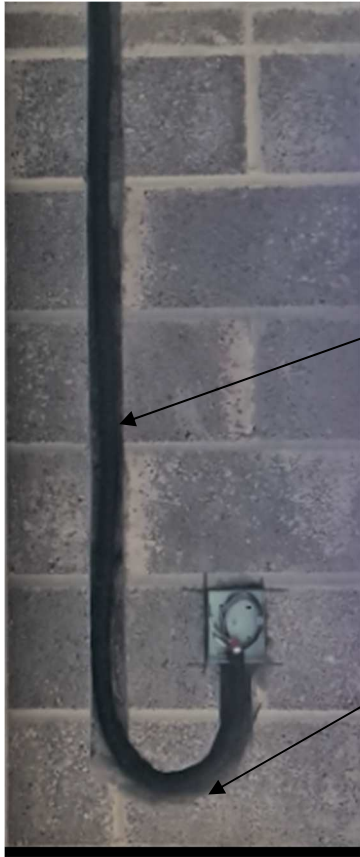
Requirements when chasing into a solid wall

- Must have minimum width chase of 40mm
- Must have minimum depth chase of 60mm
- Must be in 32mm flexi Conduit

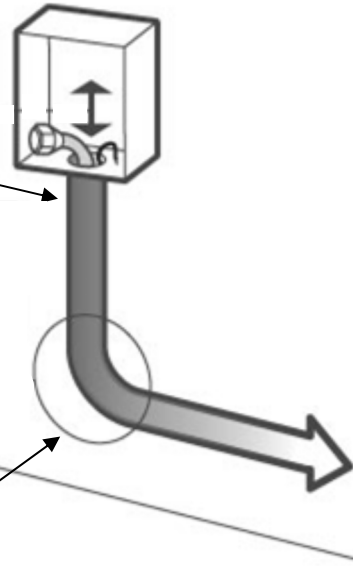


- Must Allow hose to travel 100mm inside conduit. IT CANNOT BE TRAPPED

- Must have 100mm Straight below Back Box,



- If Hose is coming from above, the chase must be looped to ensure hose comes in from bottom of the back box

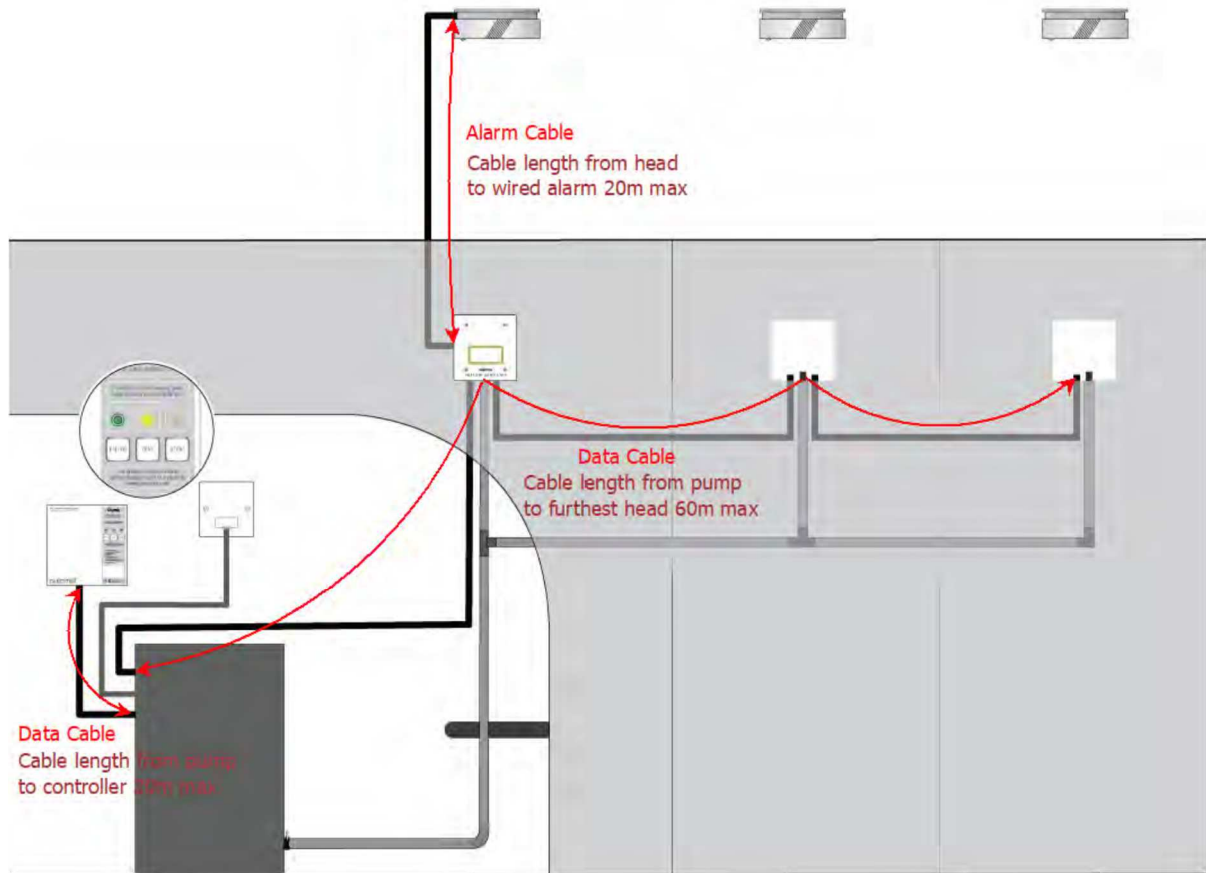


- Must have no tight corners in the chase, Minimum 150mm radius

Requirements when Stud wall

- Please bring the hose out in the stud at the height required (between 1200mm and 1450mm). Vapourmist technicians will cut out the plasterboard for the head as the smartscan spray head has plaster board tabs on it.

Section 5 - Data Cable/Alarm Detector Cable



- The data cable (Grey cable Provided) must run from the pump unit via each spray head (daisy chain) to terminate at the last spray head as agreed at site visit
- To allow our technician to make the connection at each spray head please provide a loop of approx. 30cm circumference left protruding from the Hose.
- The Alarm Cable (Black Cable Provided) Must run from head location to detector location agreed at site visit

Very Important Information regarding booking final Installation

Once you are ready to book in final installation we will send you an online checklist to complete and submit.

Once we receive this back, if we arrive on site and discover that the site is not ready, the most likely outcome is that we will be unable to complete the installation and will charge an additional call-out fee as outlined below

- The technician can do at least half install but has to come back to complete - **£250 + Vat Charge**
- The technician is unable to do the install or can do less than ½ the work and has to come back to complete - **£450 + Vat Charge**.
- Once a date is booked in our diary to complete, please keep in touch if any issues and except this as confirmed appointment. Therefore, if you need to cancel or reschedule your appointment, please do so at least 3 working days before the appointment otherwise a **£450 + Vat charge** will apply

Please also be advised that we will have to re schedule in our diary and this may mean a delay to the project.

It may sometimes be possible to correct **very minor** problems with site readiness on the day. Where we decide to do so and it proves possible to avoid an extra visit, the call-out fee will be avoided, but we will levy a charge commensurate with the disruption, labour, risk, skills and components involved. This service is subject to the specific staff member(s) having the required skills and equipment and is at their discretion on the day. Such services will in any case not be offered if carrying out the extra works would cause us to break our commitments to another customer.